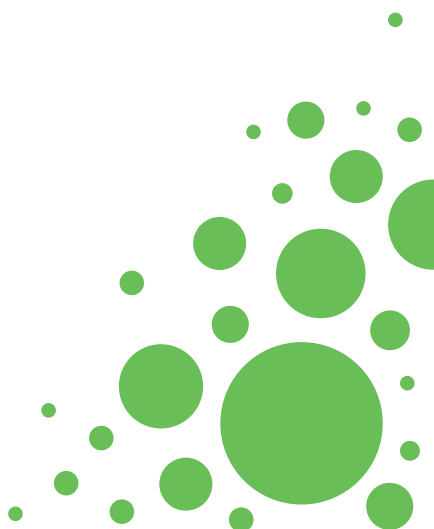
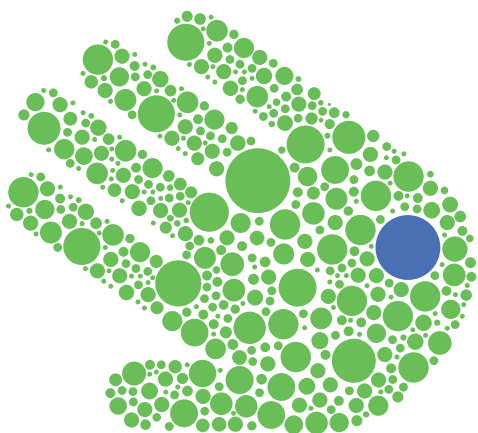




Welcome to **SMA360°**

Surrounding you with support





Your circle of support

We understand that as a caregiver or as an individual living with spinal muscular atrophy (SMA), life can be challenging. SMA360^o™ is a support service* from Biogen created to help families navigate the following areas of the process of treatment with SPINRAZA[®] (nusinersen):

- **Treatment Logistics**
- **Insurance and Financial Assistance**

With a highly variable disease like SMA, needs may vary as well. You might feel like you could use a helping hand. We have a team that will be there for you throughout the SPINRAZA journey.

Your SMA360^o team is made up of some important people: your Family Access Manager (FAM) and your Lead Case Manager (LCM). Read on to learn more about the roles they can play in your SPINRAZA experience.

*SMA360^o services from Biogen are available only to those who have been prescribed SPINRAZA. SMA360^o is intended for US residents only.

INDICATION

SPINRAZA[®] (nusinersen) is a prescription medicine used to treat spinal muscular atrophy (SMA) in pediatric and adult patients.

Please see additional Important Safety Information on page 8 and click for full [Prescribing Information](#).

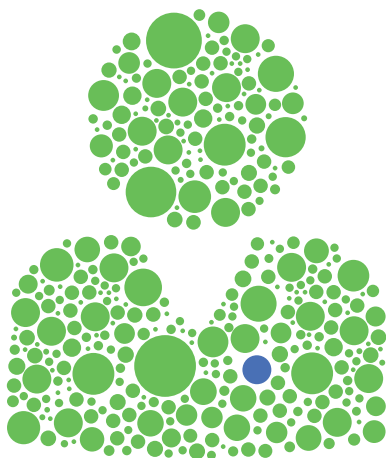
The logistics of SPINRAZA® (nusinersen)

Once a Start Form has been submitted to Biogen by your doctor, your FAM will reach out to begin helping you with the logistics surrounding your treatment. Your FAM will be your go-to person whenever you have a question or concern related to the logistics of your treatment journey while on SPINRAZA. Please remember that your/your child's healthcare provider should be the primary resource for any questions related to SMA and SPINRAZA. Your FAM can provide guidance on SMA360° support services and how you may be eligible for programs tailored to your needs.

Your FAM can:

- **Coordinate** the logistics of getting started with treatment
- **Prepare** you for the treatment journey by educating you on what to expect
- **Connect** with you at the treatment center, if you choose, to help with logistics as necessary

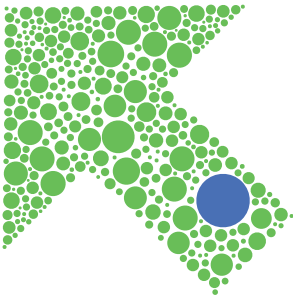
The relationship you have with your FAM should be one that's comfortable for you and your family.



SELECTED IMPORTANT SAFETY INFORMATION

Increased risk of bleeding complications has been observed after administration of similar medicines. Your healthcare provider should perform blood tests before you start treatment with SPINRAZA and before each dose to monitor for signs of these risks. Seek medical attention if unexpected bleeding occurs.

Please see additional Important Safety Information on page 8 and click for full [Prescribing Information](#).



Navigating the cost of treatment

Today's ever-changing insurance landscape can be overwhelming. SMA360° insurance and financial assistance programs are designed to help you understand your insurance benefits for SPINRAZA, and find the most affordable way to start treatment and continue as prescribed by your healthcare provider.

To help you make informed decisions regarding care, a Biogen Lead Case Manager (LCM) can:

- **Investigate** your insurance benefits to help you understand your current coverage
- **Collaborate** with healthcare providers so that they can obtain prior authorization for treatment
- **Provide** support in the event of denied insurance claims
- **Educate** you on the eligibility details of the **Biogen Copay Program**,[†] which can potentially cover both the cost of your SPINRAZA prescription and the treatment procedure
- **Supply** background and resources to refer you to third-party charitable organizations
- **Connect** you and your family to outside resources to explore other insurance options

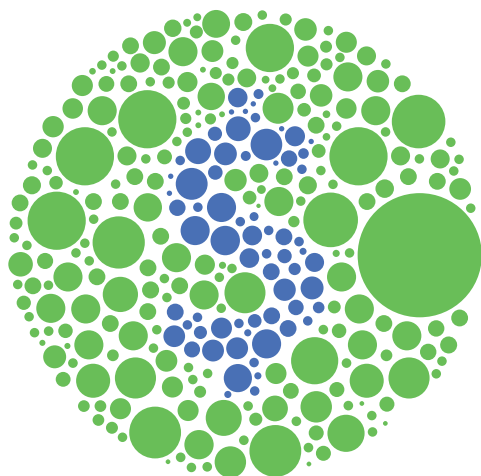
You can contact an LCM at 1-844-4SPINRAZA (1-844-477-4672), Monday through Friday, 8:30 AM-8:00 PM ET, to get more information about these services.

[†]Please see reverse for program eligibility requirements. Contact an LCM for full eligibility requirements.

SELECTED IMPORTANT SAFETY INFORMATION

Increased risk of kidney damage, including potentially fatal acute inflammation of the kidney, has been observed after administration of similar medicines. Your healthcare provider should perform urine testing before you start treatment with SPINRAZA and before each dose to monitor for signs of this risk.

Please see additional Important Safety Information on page 8 and click for full [Prescribing Information](#).



Getting affordable access to treatment

When it comes to accessing treatment, we believe that cost should not be a barrier. Our financial assistance programs are designed to help patients in a variety of financial situations find affordable access to treatment.

Our LCMs will work with you one-on-one to help identify your needs, assess which program may be appropriate for you based on needs and eligibility, and assist you in the enrollment process.

There are 2 ways in which you may be eligible for financial assistance from the Biogen Copay Program: for SPINRAZA® (nusinersen) itself, and for the treatment procedure.

Please note that these are 2 different programs, and you must enroll separately as needed.

SELECTED IMPORTANT SAFETY INFORMATION

The most common side effects of SPINRAZA include lower respiratory infection, fever, constipation, headache, vomiting, back pain, and post-lumbar puncture syndrome. These are not all of the possible side effects of SPINRAZA. Call your healthcare provider for medical advice about side effects. You may report side effects to FDA at 1-800-FDA-1088.

Please see additional Important Safety Information on page 8 and click for full [Prescribing Information](#).

Drug Copay Program

Generally, all individuals on nongovernment insurance are eligible, regardless of income, and there is no annual maximum on the amount that Biogen will cover as part of the program. Insurance will be billed first, and must pay before copay assistance will be applicable.

Individuals receiving coverage from Medicare, Medicaid, the VA/DoD, TRICARE^{®†}, or any other governmental or pharmaceutical assistance may not be eligible. Contact an LCM for more information.

Procedure Copay Program

In addition to the above criteria, you are eligible for this program if you meet the following requirements:

- You are not a resident of Massachusetts, Michigan, Minnesota, or Rhode Island
- Your healthcare provider submits a request for treatment using an approved procedure code for anesthesia, imaging procedures, and/or surgical procedure/drug administration. Only codes approved by Biogen shall be eligible under the program

Third-party funding assistance

If it is determined that you are not eligible for the **Biogen Copay Program**, an LCM can help you find charitable organizations that may provide third-party assistance.

[†]TRICARE is a registered trademark of the Department of Defense (DoD), DHA. All rights reserved.

SELECTED IMPORTANT SAFETY INFORMATION

Before taking SPINRAZA, tell your healthcare provider if you are pregnant or plan to become pregnant.

Please see additional Important Safety Information on page 8 and click for full [Prescribing Information](#).

The Free Drug Program

This program can temporarily provide Biogen products free of charge for individuals who meet certain financial eligibility criteria such as residency requirements, therapy status, income, and insurance coverage.

Individuals approved and enrolled in the Free Drug Program are required to notify the program if their insurance or financial circumstances change during their enrollment, in order to be reassessed.

You may be contacted periodically during your enrollment to:

- **Check in** to see if there have been any changes to your insurance or financial circumstances
- **Evaluate** or discuss alternative financial assistance program options
- **Assist** you in finding new or different insurance if it becomes available

The Free Drug Program only covers the cost of the drug. It is not responsible for costs associated with administration of your therapy, such as office visits, administration costs, or other professional services.

To inquire about specific program details, and to find out if you are eligible, contact an LCM at 1-844-4SPINRAZA (1-844-477-4672), Monday through Friday, 8:30 AM–8:00 PM ET.

INDICATION

SPINRAZA® (nusinersen) is a prescription medicine used to treat spinal muscular atrophy (SMA) in pediatric and adult patients.

Please see additional Important Safety Information on page 8 and click for full [Prescribing Information](#).

Indication & Important Safety Information

INDICATION

SPINRAZA® (nusinersen) is a prescription medicine used to treat spinal muscular atrophy (SMA) in pediatric and adult patients.

IMPORTANT SAFETY INFORMATION

Increased risk of bleeding complications has been observed after administration of similar medicines. Your healthcare provider should perform blood tests before you start treatment with SPINRAZA and before each dose to monitor for signs of these risks. Seek medical attention if unexpected bleeding occurs.

Increased risk of kidney damage, including potentially fatal acute inflammation of the kidney, has been observed after administration of similar medicines. Your healthcare provider should perform urine testing before you start treatment with SPINRAZA and before each dose to monitor for signs of this risk.

The most common side effects of SPINRAZA include lower respiratory infection, fever, constipation, headache, vomiting, back pain, and post-lumbar puncture syndrome.

These are not all of the possible side effects of SPINRAZA. Call your healthcare provider for medical advice about side effects. You may report side effects to FDA at 1-800-FDA-1088.

Before taking SPINRAZA, tell your healthcare provider if you are pregnant or plan to become pregnant.

Please click for full [Prescribing Information](#).

This information is not intended to replace discussions with your healthcare provider.

SPINRAZA.com | SMA360^o™ | 1-844-4SPINRAZA

